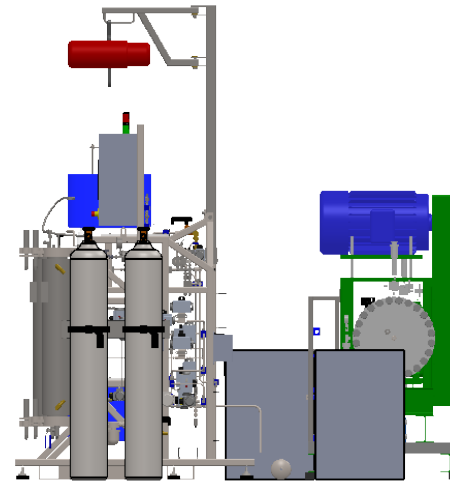
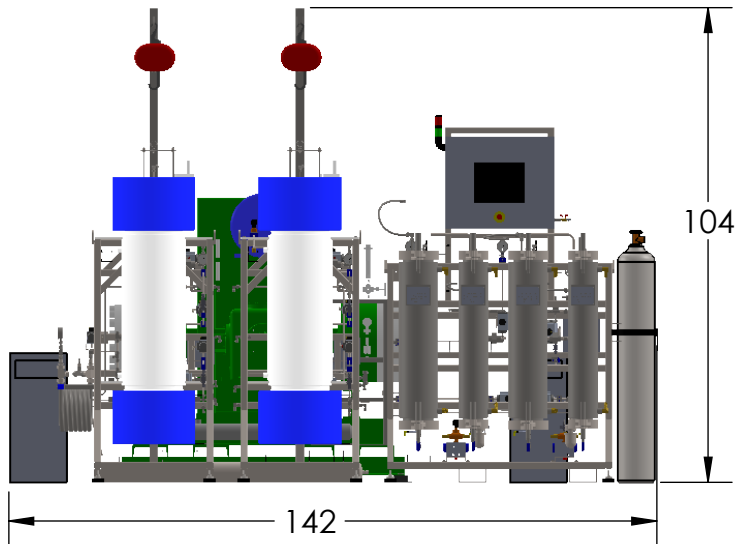


AMBIENT TEMPERATURE
REQUIREMENTS: 60-80 F



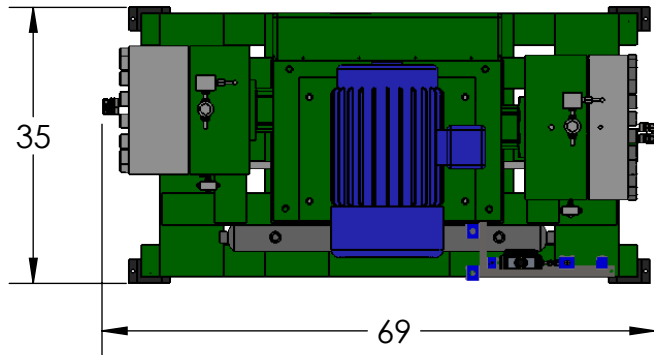
apeks®
SUPERCritical
The Power of CO₂ Extraction™

CRATE	HT	WIDTH	LENGTH	WT (LBS)
(2X) EXTRACTOR	76"	63"	76"	2975
SEPERATORS	84"	50"	62"	1350
COMPRESSOR	70"	47"	82"	5000
(2X) TCU				

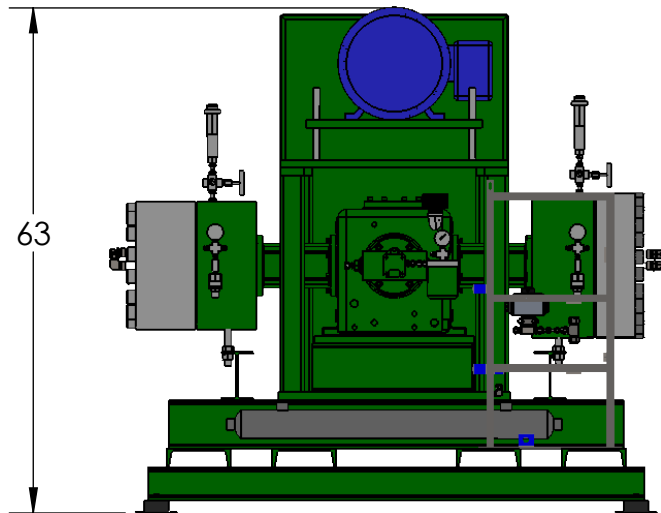
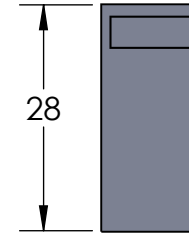
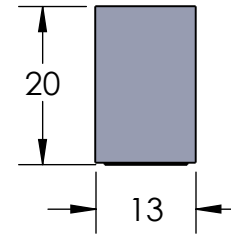
NOTE: MINIMUM CLEARANCE AROUND SYSTEM IS 36"

150 Commerce Blvd. Johnstown, OH 43031 740-809-1160	TITLE: 4/9/2019 5000-40LX40LD 2ST FOOTPRINT
MATERIAL	
FINISH	DWG. NO. REV. 5000-40LX40LD 2ST
RAW MATERIAL	SCALE: 1:42 SHEET 1 OF 4

DIAPHRAGM PUMP



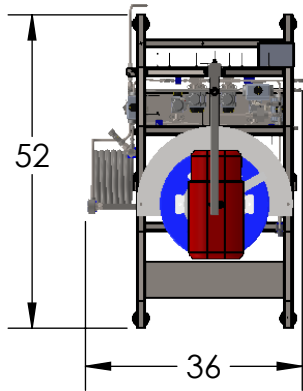
TCU



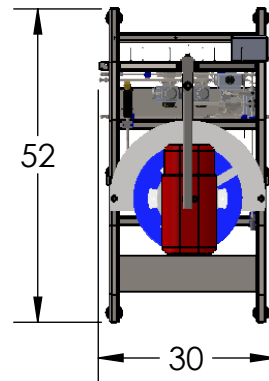
apeks®
SUPERCritical
The Power of CO₂ Extraction™

150 Commerce Blvd. Johnstown, OH 43031 740-809-1160	TITLE: 4/9/2019 5000-40LX40LD 2ST FOOTPRINT
MATERIAL	DWG. NO. REV. 5000-40LX40LD 2ST
FINISH	SCALE: 1:24 SHEET 2 OF 4
RAW MATERIAL	

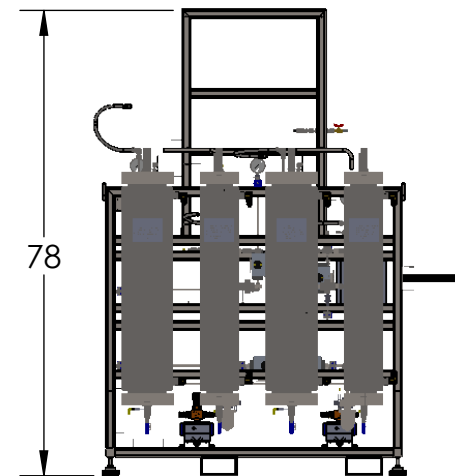
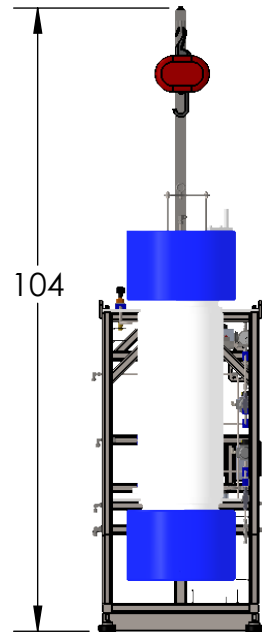
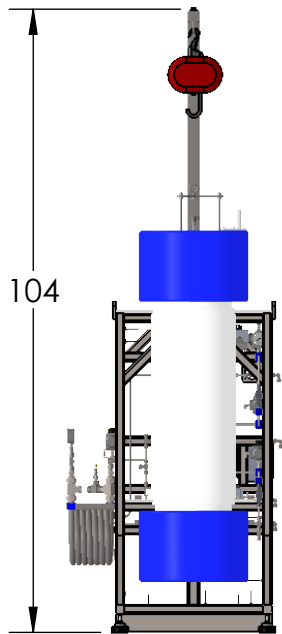
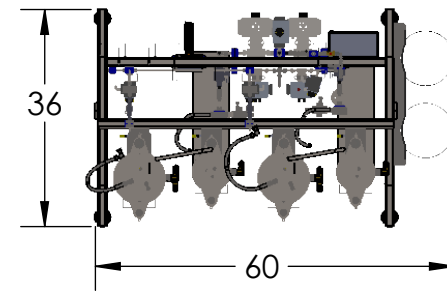
EXTRACTOR B



EXTRACTOR A



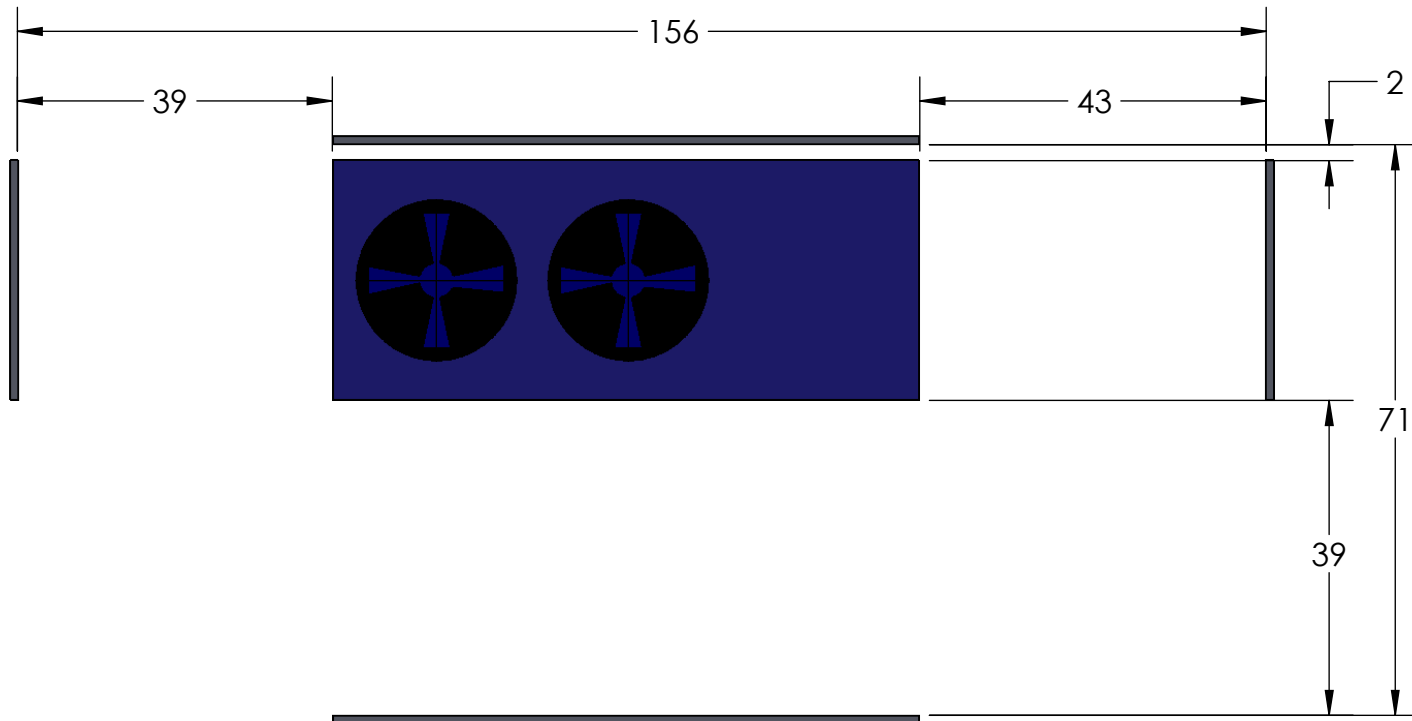
SEPARATOR



apeks®
SUPERCritical

The Power of CO₂ Extraction™

150 Commerce Blvd. Johnstown, OH 43031 740-809-1160	TITLE: 4/9/2019	
MATERIAL	5000-40LX40LD 2ST FOOTPRINT	
FINISH	DWG. NO. 5000-40LX40LD 2ST	REV.
RAW MATERIAL	SCALE: 1:32	SHEET 3 OF 4



10 TON CHILLER TO BE
LOCATED OUTSIDE OF BUILDING



150 Commerce Blvd. Johnstown, OH 43031 740-809-1160		TITLE: 4/9/2019	
MATERIAL		10 TON CHILLER	
FINISH		DWG. NO. REV.	
RAW MATERIAL		5000-40LX40LD 2ST	
		SCALE: 1:24	SHEET 4 OF 4